

RESTAFFALD

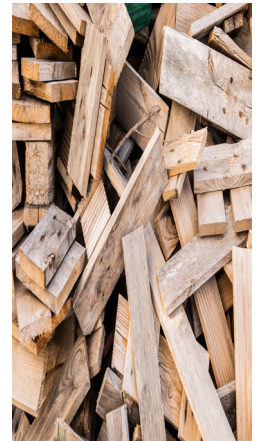
RESIDUAL WASTE



- Rest efter sortering
- Affald der ikke kan genanvendes
- Affald der kan brænde f.eks. vådt pap, papir, pizzabakker
- Chips- og kaffeposer
- Engangspapkrus
- Remains after sorting
- Waste that cannot be recycled
- Waste that can burn e.g. wet cardboard, paper, pizza trays
- Chips and coffee bags
- Disposable paper



- Elektronikaffald
- Farligt affald
- Byggeaffald
- Affald til genanvendelse
- Affald til deponi
- Restaffald over 1 meter
- Electronic waste
- Hazardous waste
- Construction waste
- Waste to be recycled
- Waste for landfill
- Residual waste over 1 meter



Scan og lær mere!

REMONDIS[®]

WORKING FOR THE FUTURE